

## Introduction

This document has been prepared as a guide to accessing the Saint John Fisher Catholic College at home system. The at home system helps members of staff continue accessing vital services like SIMS.NET on an internet enabled device.

You will need this guide if you have a computer, laptop or Tablet to access the at home system **ONLY** through Internet Explorer.



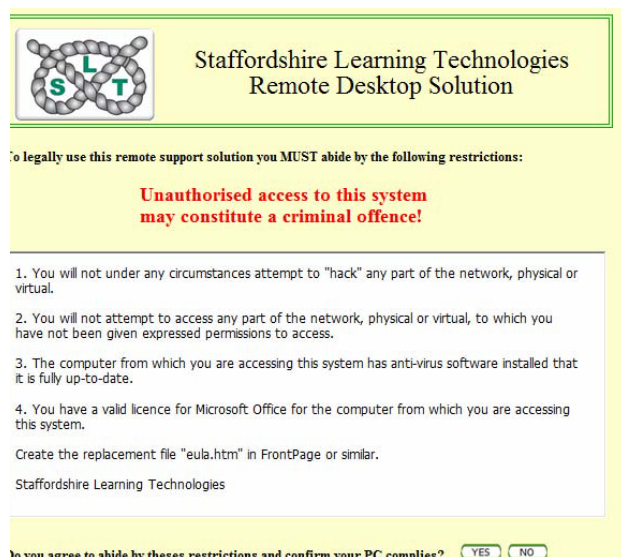
**Note: Internet Explorer Edge is not supported,**

## Procedure

1. Launch Internet explorer
  - Navigate to the school website <http://www.sjfcc.net>
  - On the menu bar click on the **Staff** Tab
  - Click on **At Home** link, you should see the picture like the below

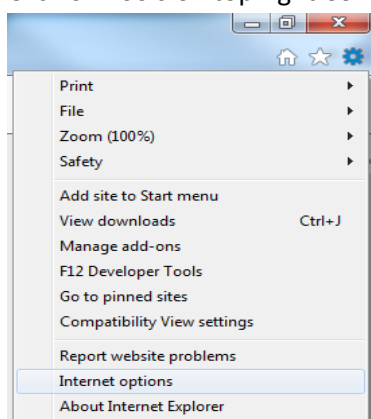


- Now Enter your Curriculum *username* and *Password*
  - Click OK
2. You are now presented with the remote access agreement from Staffordshire Learning Technologies as the diagram below.

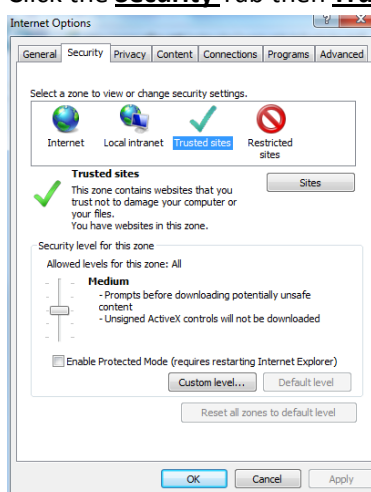


Read the access agreement and before you click “Yes” to continue, do the following procedures on your Internet explorer.

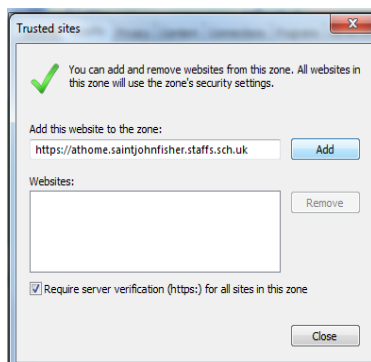
- Click on *Tools* on top right Conner then **Internet Options**



- Click the **Security** Tab then **Trusted Sites** then **Sites**

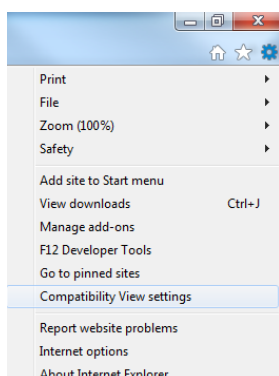


- You will be presented by the below diagram click **add** then **Close** to close the window

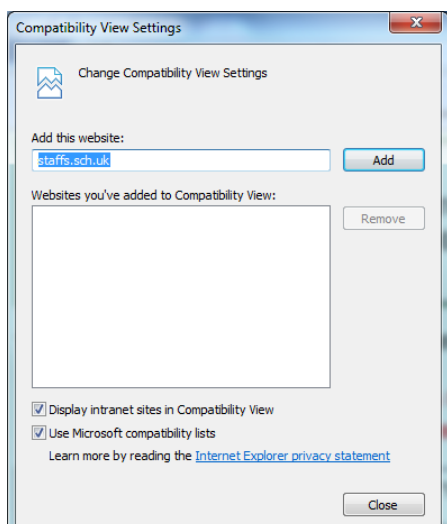


- Then **Ok** to close the next window

The last procedure, Click on **Tools** on Top right Conner then **compatibility View Settings** as the screen shot below

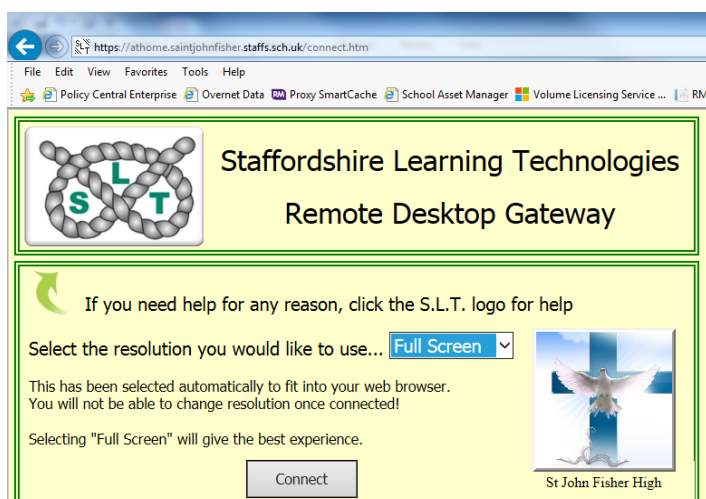


Click **Add** on the below screen then **close**



Now you can click **Yes** to the Staffordshire Learning Technologies Remote access.

Choose the resolutions (Full screen recommended) then Click **Connect**



A screen like below will appear, please click **Connect** again. Now enter your username and password again

